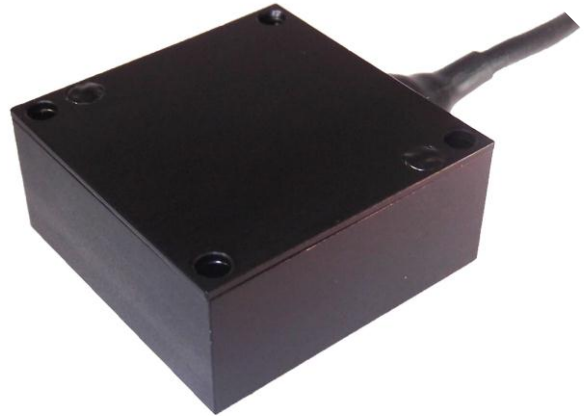




Sense
Measure
Control

Model KAAT Triaxial Accelerometer

- **Miniature Size**
- **± 2 to $\pm 200g$ Range**
- **Ruggedized Construction**
- **3 Axes of Measurement**
- **DC Response**
- **Built-in Amplifier**



The KAAT Series of miniature accelerometers offer a compact and robust solution for the motor sports and automotive testing industries.

The sensors offer 2 or 3 axis of measurement with integral signal conditioning to give a standard signal of 0.5 to 4.5V which is ideal for most data acquisition systems.

Supply voltage can be 5V or 8-16V and low current consumption of less than 35mA.

With a bandwidth of zero to 1500Hz these sensors are useful for applications within component and full vehicle testing and development programs.

Typical applications include: track mapping, cornering, braking, suspension test, aero performance, lean angle, structural analysis, launch control.

KA Sensors is a dynamic company with over 30 years of sensor and instrumentation experience in the motorsport industry. We offer a strong engineering led service to all of our customers, with speed of response and confidentiality being paramount.

Please contact us for further expert assistance with your application.

Process Measurement & Controls, Inc. - 11 Old Sugar Hollow Road – Danbury – CT 06810 - USA

Tel: 203-792-8686

Fax: 203-743-2051

Email: sales@pmc1.com

Web: www.pmc1.com

KAAT.1012U

Specifications

- **Range: ±g**
Standard ranges: 2, 5, 10, 20, 50, 100, 200
- **Bandwidth**
Range 2-10g 0-1500Hz
Range 20-100g 0-400Hz
- **Resonant Frequency**
5 kHz
- **Safe Over Range**
4000g
- **Accuracy**
<±0.5% FS linearity
- **Cross axis sensitivity**
<±2% FS (±5% for >20g)
- **Thermal Effects**
Zero: ±0.017% FS/°F
Sensitivity: 0.017% of reading / °F
- **Output**
0.5V to 4.5V (others available)
- **Supply**
5V (±0.5V) ratiometric or 8-16Vdc
- **Operating Temperature Range**
-67°F to +257°F
- **Compensated Temperature Range**
32°F to +212°F
- **Noise**
>10mg/√Hz
- **Construction**
Black Anodised Aluminum,
- **Electrical Connection**
20", 55spec, 26AWG Cable +DR25 Sleeve
- **Protection Class**
IP66
- **EMC Protection**
EN 50082-1
- **Weight**
1.02oz (excluding cable)
- **Options**
Connector fitted
Part Number Labelling

KA/PMC adopts a continuous development program which sometimes necessitates specification changes without notice

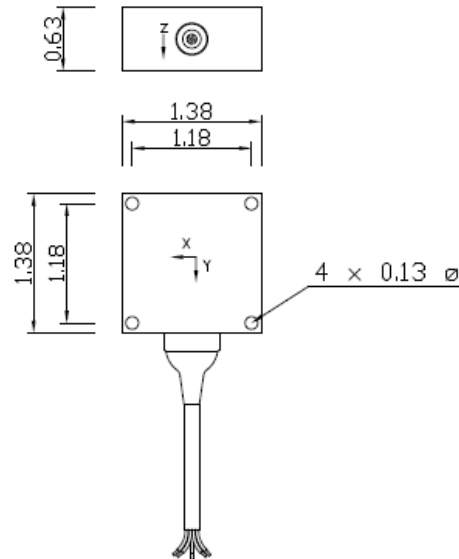
How to Order

- Please provide information as below:

	KAAT	0 0 0 /	0 /	0 /	0 0 0
Range ±g	2	0 0 2			
	5	0 0 5			
	10	0 1 0			
	20	0 2 0			
	50	0 5 0			
	100	1 0 0			
	200	2 0 0			
Supply	5V		A		
	8-16V		B		
Number of Axis	2			2	
	3			3	
Cable Length	20"				0 2 0
	40"				0 4 0

Standard Configuration

Dimensions in inches



Other Products

- KA Sensors offer a wide range of products and services to the Motor Sport Industry. Please contact us for additional information.

Process Measurement & Controls, Inc.- 11 Old Sugar Hollow Road – Danbury – CT 06810 - USA

Tel: 203-792-8686

Fax: 203-743-2051

Email: sales@pmc1.com

Web: www.pmc1.com

KAAT.1012U